



TSX Edition

*Thursday, September 18, 2003*

Volume 7, No. 38

**TSX Edition**  
September 18, 2003 - Volume 7, No. 38

## Contents

<b>Stock Trends Editorial</b>	
"Extending the Stock Trends reach" .....	3
<b>Toronto Stock Exchange (TSX):</b>	
Stock Trends TSX Portfolio .....	4
Picks of the Week .....	5
Crossovers & Predictions .....	6
New Weakening Bearish/Bullish Stocks .....	8
High Momentum Gains .....	9
Low Volume Gains .....	10
Big Buyer Interest .....	11
Relative Volume .....	12
S&P/TSX 60 Relative Strength Rankings .....	13
S&P/TSX Composite Index Stocks .....	15
TSX Industry Reports .....	18
TSX Weekly Summary .....	19
S&P/TSX Canadian Sector Indices .....	20
<b>TSX Venture Exchange (CDNX):</b>	
High Volume & Price Momentum .....	21
 ST Symbol Guide & Glossary .....	 22

---

Information provided herein is for the sole use of the subscriber and may not be reproduced in any form or by any means (whether electronic, mechanical, photographic or otherwise) without prior written permission of the publisher, Stocktrends Publications, and with the source acknowledged as Stocktrends Publications.

Every effort has been made to ensure that the information provided herein is accurate and complete, however the publisher does not guarantee the accuracy or completeness of the information and makes no warranties of merchantability or fitness for a particular purpose. In no event shall Stocktrends Publications be liable for direct, indirect or incidental, special or consequential damages resulting from the information herein regardless of whether such damages were foreseen or unforeseen. Any opinions expressed herein are given in good faith, but are subject to change without notice.

This publication is not and under no circumstances should it be construed as an offer to sell or the solicitation of an offer to buy any securities. Stocktrends Publications does not provide investment advice - readers are advised to seek the advice of a qualified and licensed investment advisor prior to investing in any securities.

---

## Extending the Stock Trends reach

---

by Skot Kortje, *Stock Trends Analyst*

**L**ong in coming, long overdue, is the graduation of Stock Trends to markets beyond the Toronto Stock Exchange. We are still not quite ready to expand our service to U.S. markets, but we have begun to generate Stock Trends indicators for international market indices and American indexes. Kevin has worked at preparing the data for presentation at the web site and toward future development of a U.S. product. Nevertheless, we can start interpreting some of the Stock Trends indicators on a broader international scale.

The application of the moving average study we apply to stocks and indexes is universal, based on discreet measures of individual securities and indices. However, the Relative Strength Indicator familiar to us is Canadian-specific, using the S&P/TSX Composite Index as the base instrument. Obviously, a more global application of the indicator demands we use an international benchmark. The one we have chosen is the S&P 500. There are other broad market indexes...and much broader...like the Wilshire 5000 (actually over 7,000 U.S. stocks) or global indices like Dow Jones Global. The S&P 500, though, remains the most watched international index, and is the core measure of how well the large capitalization U.S. stocks are doing. We use it as our base index in measuring the relative price momentum of individual U.S. stocks and market indices.

We have also used the S&P 500 as the base instrument in measuring the Relative Strength Indicator for the international market indices. This puts the individual international markets in an intermediate-term price momentum context. For instance, currently the top performing markets over the past 13-weeks are emerging markets like Pakistan, Thailand, India, Venezuela, and Brazil. The top performing major market is Japan at 16% better than the U.S. market. All international markets, additionally are in a bullish (↑) trend, with the S&P 500 index 17-weeks into this bull trend. More generally, we can interpret this picture as a very positive indicator of the strength of the bullish sentiment across markets.

We can use the Stock Trends indicators to help make decisions about allocating equity fund

investments in foreign markets. Following trends abroad will encourage us to allocate and rotate funds toward markets that are trending. Too often we choose an asset class – say a foreign equity fund like an emerging market fund – and then fail to follow through with the investment, as we should with a stock purchase in the domestic market. Rotating assets toward markets with strong bullish trends will amplify the scope of your trend trading practices.

More importantly, by expanding the scope of our Stock Trends analysis to the U.S. market and generating specific trading signals for U.S. equities opens us up to a whole new prospect for active trading. The TSX is inherently biased toward certain sectors, and offers a more limited vision of the market. The U.S. markets - the NYSE, NASDAQ, and AMEX trading we will ultimately monitor - will generate more active signals, broader trend aggregates, and more sector alternatives. This expansion to other markets is long overdue...and will ultimately serve our trading profits very well.

The ten years of publication Stock Trends has enjoyed has been a solid proving ground for our very simple approach to the market. The success of the trend approach, however debunked by those that insist you cannot time the market, is irrefutable. The failure of our trading program to adequately trade bearish trends – by shorting the market, for example – is the most glaring shortfall. However, the original intent of our trading strategies was to invoke long trading signals, by measure to appeal toward less sophisticated investors. That original premise about the type of investors Stock Trends should be geared toward does not preclude us from evolving into a service that expands the trading strategies available, based on risk and market profiles.

We hope you will continue to be patient with us as we take Stock Trends into our second decade, one which will inevitably take us to other markets. Capital will always find opportunities, and as a service provider to capital – namely yours – we hope that Stock Trends can deliver a broader spectrum of product, a vision toward global markets, and most importantly, a systematic approach to North American stock trading. Our capacity to generate results will ultimately deliver the verdict on our success.

## Stock Trends TSX Portfolio

Transactions, Current Holdings and Performance History for the Stock Trends Portfolio., which follows a trading strategy detailed in the Stock Trends Handbook. A 1% transaction commission is included in the cost of each stock purchased and deducted from the valuation of each stock currently held in the Portfolio.

### Transactions

stock trends					date	buy	stop	wks	sell	sell	net	realized
rsi	stock	symbol	shares	bought	price	loss	held	trig	price	proceeds	gain/(loss)	
SELL ↑ 5/6	★ 203 -	Helix Biopharma Corp	HBP	2,895	08/14/03	3.42	5.59	5	2	5.55	15,907	5,907
											<b>15,907</b>	<b>5,907</b>

### Current Portfolio Holdings

stock trends					date	buy	stop	wks		current		unrealized
rsi	stock	symbol	shares	bought	price	loss	held		price	value	gain/(loss)	
↑ 19/20	130 -	Cardiome Pharma Corp	COM	3,750	05/08/03	2.64	5.20	19		5.26	19,528	9,529
↑ 16/17	128 +	Wi-LAN Inc.	WIN	4,343	05/29/03	2.28	3.10	16		3.60	15,478	5,477
↑ 11/12	379 +	VSM Medtech Ltd	VSM	3,667	07/03/03	2.70	7.40	11		8.05	29,224	19,224
↑ 1/2	122 +	DataMirror Corp	DMC	734	09/11/03	13.49	13.15	1		14.30	10,391	390
↑ 1/2	126 +	Exfo Electro-Opt Engine Inc	EXF	2,067	09/11/03	4.79	4.50	1		5.00	10,232	232
↑ 1/2	125 -	High River Gold Mines Ltd	HRG	4,480	09/11/03	2.21	1.71	1		2.21	9,802	-198
											<b>94,655</b>	<b>34,654</b>

### SUMMARY

#### Current Portfolio Holdings

6 Positions Held  
 \$60,001 Total Investment Cost  
 \$94,655 Total Current Market Value  
 \$34,654 Total Unrealized Gain/(Loss)  
 57.8 % Percent Unrealized Gain/(Loss)

#### Performance History

514 Weeks Since Inception 11/11/93  
 321 Positions Held since Inception  
 \$43,460 Average Weekly Investment  
 \$212,261 Total Portfolio Gains/(Losses)  
**488.4 % Total Return on Avg Wkly Inv**  
**49.4 % Average Annual Return**



## Picks of the Week

The following TSE stocks have been selected as the Stock Trends Picks of the Week. Selection is based on trend indicators and volume requirements. Stocks are listed in descending order of Relative Strength.

stock trends	52wk			stock	symbol	close	% chg	mov avg		Vol (h)	trades	p/e
	rsi	high	low					13-wk	40-wk			
↓ 9/43	299 +	5.78	1.01	Algoma Steel Inc	AGA	3.60	4.7	2.52	2.76	5867	372	1.9
↓ 10/11	187 +	19.20	2.13	Southwestern Resources Corp	SWG	15.76	5.4	11.42	12.01	9781	1,555	
↓ 6/24	128 +	3.85	2.10	River Gold Mines Ltd	RIV	3.75	23.0	2.81	2.89	4664 ★	390	
↓ 7/54	122 +	12.60	6.20	Tembec Inc	TBC	9.70	3.7	8.39	8.88	5822	382	
↓ 1/2	114 +	6.60	0.85	Biomira Inc	BRA	2.95	47.5	1.99	2.00	34072 ★	3,237	
↓ 2/3	109 +	2.96	1.25	StressGen Biotechnologies Corp	SSB	2.18	14.7	1.76	1.77	16525 ★	994	
■ 1/1	105 +	17.50	6.57	Royal Group Technologies Ltd	RYG	11.70	3.6	10.77	10.70	9047	1,137	10.9
↓ 9/56	103 +	33.87	24.65	Nova Chemicals Corp	NCX	29.50	0.8	28.05	28.36	14576	1,258	161.7
↓ 1/7	101 +	7.48	4.30	FNX Mining Company Inc	FNX	6.94	5.5	6.46	6.50	10106	240	
↓ 6/23	100 +	17.80	13.50	Domtar Inc	DTC	16.55	5.8	15.26	15.48	24925	2,657	28.5

## TSX Crossovers & Crossover Predictions

TSE stocks with a moving average crossover during the past week, or predicted to have a moving average crossover within the next two week period. Moving average crossovers occur when the short-term (13 week) moving average of weekly closing prices moves above (Bullish Crossover) or below (Bearish Crossover) the longer term (40 week) moving average of weekly closing prices. Stocks are listed in order of 13 week Relative Strength. Bracketed numbers beside the Stock Trends counter values refer to the number of weeks the stock was in the previous major trend (Bullish or Bearish).

stock trends	52wk			stock	symbol	close	% chg	mov avg		Vol (h)	trades	p/e
	rsi	high	low					13-wk	40-wk			
<b>■ Bullish Crossovers</b>												
■ 1/1(36)	219 +	0.22	0.07	Jonpol Explorations Ltd	JON	0.20	17.6	0.10	0.10	35471 ★	280	
■ 1/1(27)	206 +	0.85	0.16	Diamond Fields International Ltd	DFI	0.73	7.4	0.39	0.39	23624 ★	691	
■ 1/1(15)	186 +	0.77	0.25	GLR Resources Inc	GRS	0.70	42.9	0.38	0.38	8629 ★	248	
■ 1/1(16)	182 +	0.51	0.13	Voice Mobility International Inc	VMY	0.39	30.0	0.33	0.32	1683 ★	37	
■ 1/1(19)	168 -	0.30	0.06	Adrian Resources Ltd	ADL	0.18	-5.3	0.13	0.12	7199 ★	55	
■ 1/1(21)	133 +	0.50	0.10	Infowave Software Inc	IW	0.30	11.1	0.25	0.25	130620 ★	2,123	
■ 1/1(24)	131 -	0.85	0.40	Pacific North West Capital Corp	PFN	0.69	-8.0	0.51	0.50	3073	74	
■ 1/1(23)	130 +	1.43	0.81	Pulse Data Inc	PSD	1.35	0.7	1.07	1.06	2455	117	7.5
■ 1/1(58)	128 -	1.47	0.89	International Road Dynamics Inc	IRD	1.31	-6.4	1.11	1.09	945	64	43.7
■ 1/1(22)	121 +	0.12	0.04	Canlan Ice Sports Corp	ISE	0.07	18.2	0.07	0.07	1047	11	
■ 1/1(44)	109 -	27.50	17.00	Harris Steel Group Inc Cl B	HSG.B	21.00	0.0	20.09	19.86	1 ☆	1	8.5
■ 1/1(30)	107 -	108.50	81.50	Potash Corp of Sask Inc	POT	96.73	-0.9	92.45	91.46	3595	1,006	54.4
■ 1/1(57)	105 +	17.50	6.57	Royal Group Technologies Ltd	RYG	11.70	3.6	10.77	10.70	9047	1,137	10.9
■ 1/1(59)	104 +	68.75	44.00	General Motors Corp	GM	56.73	0.1	52.71	52.31	145	77	8.2
■ 1/1(24)	99 +	8.87	6.53	Martinrea International Inc	MRE	7.59	4.0	7.61	7.60	7250	228	33.0
■ 1/1(22)	98 -	1.44	0.62	Antrim Energy Inc	AEN	0.82	0.0	0.86	0.86	992	37	
■ 1/1(65)	93 -	1.20	0.35	Cell-Loc Inc	CLQ	0.54	0.0	0.52	0.51	1023	71	
<b>⇩ Bullish Crossover Predictions</b>												
⇩ 10/11	187 +	19.20	2.13	Southwestern Resources Corp	SWG	15.76	5.4	11.42	12.01	9781	1,555	
⇩ 8/19	160 -	0.08	0.02	Kyrgoil Holding Corp	KGO	0.06	-7.7	0.05	0.05	9689 ★	30	
⇩ 6/59	159 -	0.55	0.08	Afton Food Group Ltd	AFF	0.20	-6.8	0.17	0.17	224	9	
⇩ 7/9	158 +	0.12	0.02	Printera Corp	PAC	0.09	6.3	0.06	0.06	385 ☆	11	1.7
⇩ 5/88	149 +	0.06	0.03	Nexus Group International Inc	NXS	0.04	14.3	0.03	0.03	117040	313	
⇩ 3/126	144 +	0.90	0.46	Chromos Molecular Systems Inc	CHR	0.85	13.3	0.61	0.62	4381 ★	89	
⇩ 3/69	135 -	0.50	0.17	Continental Home Healthcare Lt	CHT	0.29	-3.3	0.23	0.23	396	16	
⇩ 9/18	132 +	0.25	0.09	Sterlite Gold Limited	SGD	0.17	6.3	0.15	0.15	11049	77	11.0
⇩ 10/62	132 -	4.25	1.26	Westport Innovations Inc	WPT	1.88	-1.1	1.74	1.78	14021	908	
⇩ 9/22	128 -	6.48	3.80	Richmont Mines Inc	RIC	5.77	-6.0	4.94	5.03	951	103	11.8
⇩ 5/18	126 +	2.27	0.85	Dynetek Industries Ltd	DNK	1.74	9.4	1.36	1.39	1732 ★	112	
⇩ 3/44	124 -	8.02	5.00	Cara Operations Ltd A	CAO.A	7.75	-0.6	6.14	6.18	18917	184	15.2
⇩ 14/52	116 +	7.05	3.40	Transat AT Inc	TRZ	5.79	12.9	5.00	5.01	2273	122	
⇩ 1/2	114 +	6.60	0.85	Biomira Inc	BRA	2.95	47.5	1.99	2.00	34072 ★	3,237	
⇩ 2/47	114 +	2.53	1.95	Gastar Exploration Ltd	YGA	2.50	5.5	2.12	2.14	607	33	
⇩ 5/70	110 +	0.44	0.22	Twin Mining Corp	TWG	0.36	4.3	0.31	0.31	6516	118	
⇩ 5/15	109 -	18.49	14.11	Agrium Inc	AGU	17.55	-1.3	15.97	16.03	18786	1,465	23.0
⇩ 2/3	109 +	2.96	1.25	StressGen Biotechnologies Corp	SSB	2.18	14.7	1.76	1.77	16525 ★	994	

## TSX Crossovers & Crossover Predictions

*Continued from the previous page*

TSE stocks with a moving average crossover during the past week, or predicted to have a moving average crossover within the next two week period. Moving average crossovers occur when the short-term (13 week) moving average of weekly closing prices moves above (Bullish Crossover) or below (Bearish Crossover) the longer term (40 week) moving average of weekly closing prices. Stocks are listed in order of 13 week Relative Strength. Bracketed numbers beside the Stock Trends counter values refer to the number of weeks the stock was in the previous major trend (Bullish or Bearish).

stock trends		52wk		stock	symbol	close	% chg	mov avg		Vol (h)	trades	p/e
rsi		high	low					13-wk	40-wk			
<b>↓ Bullish Crossover Predictions</b>												
↓2/3	107 +	2.84	1.80	Denison Energy Inc	DEN	2.65	1.9	2.37	2.39	1001	80	26.5
↓4/57	106 -	3.00	2.00	Amica Mature Lifestyles Inc	ACC	2.50	0.0	2.28	2.28	56	6	8.9
↓6/9	106 -	25.00	17.65	Mega Bloks Inc	MB	23.75	-1.6	21.58	21.71	4570	279	15.6
↓5/26	102 -	2.87	1.50	Genesis Land Development Cp	GDC	2.15	0.0	1.97	1.98	2343	103	9.8
↓2/30	102 -	25.40	14.75	Reitmans (Canada) Ltd A	RET.A	20.00	-2.9	18.26	18.33	98 ☆	26	14.6
↓1/7	101 +	7.48	4.30	FNX Mining Company Inc	FNX	6.94	5.5	6.46	6.50	10106	240	
<b>□ Bearish Crossovers</b>												
□1/1(14)	75 +	5.90	3.21	Persona Inc	PSA	3.98	0.8	4.38	4.40	1136	158	
□1/1(11)	81 -	75.30	55.50	Burlington Resources Inc	B	62.54	-4.3	68.21	68.35	215 ★	53	10.6
□1/1(80)	82 -	16.27	11.58	Methanex Corp	MX	13.40	-6.9	13.80	13.86	24976	2,325	7.5
<b>↑ Bearish Crossover Predictions</b>												
↑7/9	65 +	15.00	5.50	SR Telecom Inc	SRX	6.96	0.3	8.75	8.54	5786 ★	574	
↑5/12	73 +	0.99	0.33	Basis 100 Inc	BAS	0.55	5.8	0.60	0.60	4722	133	
↑4/9	75 -	0.23	0.10	Pacrim International Cap Inc	PCN	0.14	0.0	0.17	0.17	55	3	2.0
↑6/14	78 -	6.75	4.90	Storm Energy Ltd	SEM	5.25	-4.5	5.82	5.80	1732	70	
↑2/12	79 -	0.16	0.07	MDP Worldwide Entertainment Inc B	MDP.B	0.09	0.0	0.09	0.09	1800	20	8.5
↑1/16	79 -	0.15	0.08	Sutton Group Fincl Svcs Ltd	SUG	0.11	-15.4	0.11	0.11	1325 ★	12	
↑3/35	84 -	26.00	16.00	MacDonald Dettwiler and Associates	MDA	21.89	-1.6	23.32	23.30	2671 ☆	479	19.5
↑3/16	85 -	5.25	3.80	Coreco Inc	CRC	4.30	0.0	4.56	4.55	77	13	28.5
↑2/4	88 +	34.20	21.90	Rothmans Inc	ROC	24.80	1.2	25.85	25.77	1263 ☆	272	9.9
↑1/31	90 -	0.37	0.14	Tiomin Resources Inc	TIO	0.27	-10.0	0.28	0.28	6506	93	

## TSX New Weakening Bearish/Bullish Stocks

This report lists stocks (market cap >= \$250-million) that have penetrated an envelope along the 13-week moving average. Stocks changing from bearish to weak bearish indicate that a support level has been found and that traders can look for volume confirmation in the short-term momentum. Stocks changing from bullish to weak bullish have met price resistance, alerting traders to the weakness of the underlying long-term bull trend. (Note: stocks listed must have a long-term trend counter greater than 4 weeks.)

stock trends		52wk		stock	symbol	close	% chg	mov avg		Vol (h)	trades	p/e
rsi		high	low					13-wk	40-wk			
<b>↓ New Weakening Bearish Stocks ( 3 )</b>												
↓1/7	101 +	7.48	4.30	FNX Mining Company Inc	FNX	6.94	5.5	6.46	6.50	10106	240	
↓1/24	98 +	36.28	18.40	Hummingbird Ltd	HUM	28.90	5.3	27.13	27.87	1634	234	97.6
↓1/64	98 +	29.35	24.61	Laurentian Bank	LB	27.31	4.0	25.99	26.28	3555	1,182	14.9
<b>↑ New Weakening Bullish Stocks ( 9 )</b>												
↑1/10	82 -	23.25	14.40	Forzani Group Ltd A	FGL	17.85	-3.5	18.68	18.05	6272	273	18.6
↑1/13	82 -	4.24	2.50	Isotechnika Inc	ISA	3.36	-7.4	3.57	3.22	4483	483	
↑1/36	84 -	38.75	26.61	Molson Inc A	MOLA	33.88	-1.2	35.01	33.97	28054	2,730	16.3
↑1/34	89 -	53.55	40.60	EnCana Corp	ECA	48.00	-5.5	50.54	48.97	101099	6,990	7.9
↑1/28	90 -	57.39	38.80	Canadian Natural Resources Ltd	CNQ	52.30	-5.3	54.07	50.93	23223	2,178	5.5
↑1/7	91 -	31.25	21.25	Empire Co Ltd A	EMP.A	25.45	-2.1	26.60	26.13	1136	293	10.7
↑1/169	91 -	60.95	46.50	Fortis Inc	FTS	54.91	-7.5	58.85	54.56	3674 ★	1,085	13.1
↑1/87	96 -	42.50	30.00	Gildan Activewear Inc	GIL.A	37.09	-11.5	39.86	38.40	13139 ★	718	14.0
↑1/12	96 -	29.00	17.34	Hub International Ltd	HBG	23.16	-2.3	24.16	21.88	389	99	13.6

## Top TSX High Momentum Gains

The Top TSE stocks ranked by Momentum Index - defined as the % change in price weighted 50% by the Relative Volume (Outstanding Shares) factor and 50% by the Relative Volume (13 Week Average) factor. Minimum of 100,000 shares traded.

stock trends	52wk			stock	symbol	close	% chg	Vol (h)	trades	Mom.	
	rsi	high	low							Index	Industry
1  3/4	273 +	0.50	0.09	Canadian Zinc Corp	CZN	0.44	83.3	83647★	1442	<b>852.28</b>	Metal mines
2  5/26	131 +	1.17	0.55	Timminco Ltd	TIM	1.15	21.1	18990★	594	<b>212.50</b>	Misc. industrial
3  1/155	132 +	0.50	0.07	CrossOff Inc	OFF	0.14	68.8	2130★	32	<b>138.23</b>	Other business
4  2/3	151 +	0.79	0.30	DiagnoCure Inc	CUR	0.73	58.7	23664★	679	<b>122.18</b>	Biotechnology &
5  1/2	114 +	6.60	0.85	Biomira Inc	BRA	2.95	47.5	34072★	3237	<b>97.54</b>	Biotechnology &
6  1/2	293 +	0.66	0.13	Medcomsoft Inc	MSF	0.66	46.7	9785★	195	<b>94.72</b>	Computer software &
7  1/119	74 +	3.25	1.00	Dimethaid Research Inc	DMX	1.61	43.7	35710★	2160	<b>90.12</b>	Biotechnology &
8  1/1	186 +	0.77	0.25	GLR Resources Inc	GRS	0.70	42.9	8629★	248	<b>87.83</b>	Precious metals
9  7/8	191 +	0.44	0.08	Breakwater Resources Ltd	BWR	0.41	41.4	179938★	1892	<b>86.57</b>	Metal mines
10  11/12	202 +	0.33	0.06	Yorbeau Resources Inc A	YRB.A	0.26	40.5	42117★	361	<b>83.28</b>	Precious metals
11  1/15	115 +	2.70	0.76	World Heart Corp	WHT	1.54	40.0	17649★	879	<b>83.21</b>	Medical services
12  9/10	189 +	0.80	0.23	Mitec Telecom Inc	MTM	0.71	36.5	34078★	1006	<b>75.88</b>	Telecommunications
13  4/22	136 +	1.28	0.33	Ecopia BioSciences Inc	EIA	1.18	35.6	20294★	1011	<b>72.63</b>	Biotechnology &
14  16/17	135 +	0.90	0.40	Nelson Resources Ltd	NLG	0.90	32.4	13621★	163	<b>64.86</b>	Oil and gas producers
15  5/16	173 +	0.10	0.02	Channel Resources Ltd	CHU	0.07	30.0	40777★	163	<b>63.87</b>	Precious metals
16  9/10	90 +	0.95	0.25	Atlantis Systems Corp	AIQ	0.50	31.6	1156★	29	<b>63.46</b>	Transportation equip.
17  5/6	302 +	2.04	0.57	Bioscrypt Inc	BYT	1.85	30.3	32730★	2358	<b>62.86</b>	Misc. industrial
18  1/59	111 +	0.95	0.26	Electrofuel Inc	EFL	0.38	31.0	4912★	92	<b>62.22</b>	Misc. industrial
19  1/1	182 +	0.51	0.13	Voice Mobility International Inc	VMY	0.39	30.0	1683★	37	<b>60.15</b>	
20  8/34	128 +	7.62	1.85	Labopharm Inc	DDS	7.43	28.3	17331★	1573	<b>57.96</b>	Biotechnology &
21  22/23	134 +	3.70	1.23	Westaim Corp	WED	3.30	26.9	55564★	3874	<b>55.71</b>	Misc. industrial
22  16/17	131 +	4.90	1.45	Oncolytics Biotech Inc	ONC	4.78	26.8	13023★	1639	<b>55.02</b>	Biotechnology &
23  1/18	118 +	0.28	0.11	Tahera Corp	TAH	0.17	26.9	156364★	827	<b>55.00</b>	Other mines
24  7/24	77 +	0.24	0.04	Mobile Computing Corp	MBL	0.07	27.3	5526★	52	<b>54.93</b>	Computer software &
25  3/23	133 +	0.93	0.07	ADB Systems International Inc	ADY	0.47	25.3	17624★	383	<b>51.53</b>	Other services
26  3/32	131 +	0.40	0.11	ONX Enterprise Solutions Inc	ON	0.38	24.6	2729★	54	<b>49.32</b>	Computer software &
27	189 +	0.38	0.15	Adeptron Techs Corp	ATQ	0.34	23.2	9305★	100	<b>47.10</b>	Other services
28  6/19	202 +	5.20	1.10	Surefire Commerce Inc	FIR	4.77	23.3	2639★	457	<b>47.06</b>	Computer software &
29  1/14	101 +	0.65	0.26	Procyon BioPharma Inc	PBP	0.53	23.3	7461★	199	<b>46.85</b>	Biotechnology &
30  6/24	128 +	3.85	2.10	River Gold Mines Ltd	RIV	3.75	23.0	4664★	390	<b>46.25</b>	Precious metals

## Top TSX Low Volume Gains

These TSE common stocks performed better than the TSX Composite index this week, advancing on weak volume. Trading volume during the week for these mid and large-cap stocks (capitalization greater than \$250-million) was less than 50% of their 13-week average volume. The Relative Volume (% of outstanding shares that traded during the week) is also shown. Stocks gaining on low volume alert us to situations of both concern and interest. Trading that moves a bullish stock on weak volume is often viewed as a warning that the prevailing trend is on weak legs. Generally, a technically sound trend is supported by strong and consistent volume. Conversely, a bear stock advancing on weak volume alerts us to a potential breakout. The premise of "smart money" implies that value-hunters have identified a trading opportunity and have bid the share price higher in a relatively weak market. Subscribers can pay particular attention to bear and weak bearish stocks making this report and look for confirmation of the trading volume in subsequent weeks.

	stock trends		52wk		stock	symbol	close	% chg	Vol (h)	rel vol		avg traded value
	rsi		high	low						%	trades	
1	▲ 10/11	145 +	14.38	5.62	GSI Lumonics Inc	LSI	13.80	4.2	1356☆	0.3	267	7,009
2	▼ 5/17	103 +	8.00	4.80	Hydrogenics Corp	HYG	6.89	4.2	1097☆	0.2	233	3,244
3	▲ 13/14	108 +	23.25	11.51	Alliance Atlantis Communications Co	AAC.B	22.01	3.7	2979☆	0.7	264	24,836
4	▲ 21/36	122 +	9.15	3.75	Inmet Mining Corp	IMN	9.10	3.4	2198☆	0.5	100	20,002
5	▲ 13/14	104 +	17.90	10.40	Trizec Canada Inc	TZC	15.70	3.3	1274☆	0.2	142	14,086
6	▲ 6/6	107 +	33.45	19.10	TSX Group Inc	X	33.00	3.1	2084☆	0.6	371	18,537
7		96 +	20.25	15.41	Transcontinental Inc B	TCL.B	20.00	2.9	35☆	0.0	7	10,000
8	▲ 11/12	121 +	13.08	8.25	Linamar Corp	LNR	11.75	2.4	2532☆	0.3	191	15,576
9	▼ 3/49	83 +	22.90	12.11	Aastra Technologies Ltd	AAH	15.23	2.2	1336☆	0.7	348	5,847
10	▲ 5/6	96 +	34.86	16.24	FirstService Corp	FSV	22.50	2.0	220☆	0.1	34	14,559
11	▲ 6/7	149 +	4.48	2.42	Lions Gate Entertainment Corp	LGF	4.36	1.4	126☆	0.0	21	2,616
12	▲ 2/4	88 +	34.20	21.90	Rothmans Inc	ROC	24.80	1.2	1263☆	0.3	272	11,516
13	▼ 2/12	94 +	19.90	13.22	DALSA Corp	DSA	16.20	1.1	1162☆	0.7	143	13,164
14	▲ 22/23	99 +	33.21	20.26	Finning International Inc	FTT	32.30	0.8	3611☆	0.4	599	19,472
15		91 +	113.00	103.50	RBC Capital Trust P	RYT.P	109.00	0.8	60☆	0.0	2	327,000
16	▲ 6/34	93 +	33.50	27.80	Mullen Transportation	MTL	31.55	0.5	633☆	0.4	69	28,944
17	▼ 3/18	93 +	39.05	26.27	West Fraser Timber	WFT	35.50	0.5	216☆	0.0	47	16,315
18	▲ 11/12	93 +	59.46	45.50	Canadian Utilities Ltd CI X	CU.X	54.45	0.4	25☆	0.0	8	17,016
19		95 +	44.85	35.80	Terasen Inc	TER	44.20	0.2	1753☆	0.3	445	17,412

## Top TSX Big Buyer Interest

Top TSE stocks, ranked by % change in price for the week, with a minimum volume of 100,000 shares and minimum Average Traded Value of \$100,000 per trade, indicating that institutional players made up some of the trading activity. By highlighting stocks with strong institutional interest over the previous week, this report lets you know what the big players are doing and reveals possible trends in the market. Stocks are listed in descending order of percentage change in price for the week.

1	stock trends		52wk		stock	symbol	close	% chg	Vol (h)	rel vol		avg traded value
	rsi		high	low						%	trades	
1	↘ 2/52	109 +	12.25	6.51	Premium Brands Inc	FFF	8.55	3.0	4024★	3.8	22	156,387
2	↗ 12/13	96 +	93.00	80.00	Petrobank Energy And Res Ltd	PBG.N	92.50	1.1	6000	68.5	7	7,928,571
3	↗ 30/31	93 +	103.50	87.00	Manulife Financial Cap Trust M	MFT.M	100.00	0.3	3960	66.0	20	1,980,000
4	↗ 14/14	91 +	111.63	101.00	Sun Life Capital Trust M	SLE.M	108.90	0.2	412130★	433.8	7	**, **, **
5	↗ 15/15	91 +	116.88	104.00	Toronto-Dominion Capital Trust M	TDD.M	113.70	0.1	112300	124.8	8	**, **, **
6		92 -	108.42	102.44	Toronto-Dominion Mortgage Investmen	TDB.M	104.00	0.0	1450	4.1	10	1,508,000
7	↗ 27/31	99 -	43.44	31.90	IUnits S&P/TSX 60 Index Fund Units	XIU	42.95	-0.2	94748	8.0	1,262	322,459
8	↗ 12/13	90 -	115.12	104.52	RBC Capital Trust	RYT.M	111.00	-0.7	417470★	642.3	10	**, **, **
9	↗ 13/14	100 -	28.53	20.01	Vincor International Inc	VN	27.26	-1.2	11147★	4.1	178	170,712
10	↗ 2/2	127 -	59.70	31.94	Allstream Inc B	ALR.B	53.80	-1.4	4195	2.2	104	217,011
11	↗ 15/16	98 -	21.39	17.65	Morguard Corp	MRC	20.25	-2.4	6172★	4.2	49	255,067
12	↘ 5/54	87 -	15.99	10.51	Cossette Communication Group	KOS	11.75	-3.3	1914★	1.9	7	321,279



## S&P/TSX 60 Relative Strength Rankings

These S&P/TSX 60 stocks are ranked by 13-week Relative Strength Indicator. The S&P/TSX 60 Index is comprised of 60 blue chip TSX stocks and provides economic diversity over eleven market sectors, including basic materials, capital goods, communication services, consumer cyclical, consumer staples, energy, financials, health care, technology, transportation and utilities. This newly created index will ultimately replace the TSE 35/100/200 indexes, so trading in these constituent stocks will reflect the portfolio demands of fund managers weighted in Canadian stocks.

	stock trends		52wk		stock	symbol	close	%	Vol (h)	trades	P/E	Industry
	rsi	high	low									
1	▲ 15/16	176 +	21.55	5.54	ATI Technologies Inc	ATY	20.81	4.3	56616	6,991		Electrical & electronic
2	▲ 23/36	136 +	6.50	0.67	Nortel Networks Corp	NT	6.06	11.0	*****	51,217		Telecommunications
3	▲ 25/49	130 +	30.35	16.17	Canadian Pacific Ships Ltd	TEU	30.35	3.2	16440	2,068	31.6	Transportation
4	▲ 3/4	126 +	38.06	24.30	Inco Ltd	N	37.86	5.0	43479	4,910	32.5	Integrated mines
5	▲ 5/6	123 +	14.83	9.85	Teck Cominco Ltd B	TEK.B	14.83	4.1	37395	3,057	74.2	Integrated mines
6	▲ 5/6	117 +	6.77	2.56	Bombardier Inc B	BBD.B	5.70	0.4	417200	14,165		Transportation equip.
7	▲ 5/6	115 +	53.75	36.90	Alcan Inc	AL	53.25	10.5	103093	11,152	76.0	Integrated mines
8	▲ 9/10	111 -	6.79	2.76	CAE Inc	CAE	6.41	-4.6	92634	3,952	15.3	Transportation equip.
9	▼ 5/15	109 -	18.49	14.11	Agrium Inc	AGU	17.55	-1.3	18786	1,465	23.0	Chemicals
10	■ 1/1	107 -	108.50	81.50	Potash Corp of Sask Inc	POT	96.73	-0.9	3595	1,006	54.4	Chemicals
11	▲ 6/8	106 -	29.99	13.50	Celestica Inc	CLS	24.70	-0.1	58709	8,874		Electrical & electronic
12	▲ 3/4	106 -	40.60	28.10	Fairmont Hotels & Resorts In	FHR	34.79	-1.3	5392	1,180	17.9	Lodging
13	▲ 35/36	106 -	20.95	15.43	Husky Energy Inc	HSE	20.10	-2.4	23520	2,002	6.7	Integrated oils
14	▼ 6/56	105 +	13.13	8.45	Abitibi Consolidated Inc	A	10.18	1.2	82304	3,189	10.3	East coast forestry
15	■ 1/1	105 +	17.50	6.57	Royal Group Technologies Ltd	RYG	11.70	3.6	9047	1,137	10.9	Misc. industrial
16	▲ 13/14	104 -	116.75	73.80	Magna International Inc A	MG.A	101.02	-2.3	5902 ☆	1,364	11.5	Automotive
17	▲ 23/24	104 -	43.70	27.62	Manulife Financial Corp	MFC	43.04	-0.2	38173	3,327	14.1	Insurance - life
18	▲ 27/48	103 +	47.17	33.78	Bank of Montreal	BMO	46.27	0.2	36990	4,062	14.1	Banks
19	▲ 13/14	103 -	33.50	22.00	Cott Corp	BCB	31.39	-1.9	5481	555	238.2	Food processing
20	▼ 9/56	103 +	33.87	24.65	Nova Chemicals Corp	NCX	29.50	0.8	14576	1,258	161.7	Chemicals
21	▲ 21/35	102 +	48.50	25.15	Cameco Corp	CCO	48.43	3.2	14055	788	15.9	Integrated mines
22	▲ 8/9	102 -	39.68	28.26	Nexen Inc	NXY	37.19	-3.7	32109	2,861	6.0	Oil and gas producers
23	▲ 9/10	102 -	19.72	12.66	Placer Dome Inc	PDG	18.55	-4.5	101388	5,930	36.5	Precious metals
24	▲ 5/6	101 -	32.30	25.12	Dofasco Inc	DFS	29.92	-3.6	13526	1,702	18.4	Steel
25	▲ 19/33	101 -	53.49	41.55	Imperial Oil Ltd	IMO	50.32	-4.1	16427	2,041	10.3	Integrated oils
26	▲ 2/3	101 +	16.60	11.69	Noranda Inc	NRD	14.23	3.1	46085	3,027		Integrated mines
27	▲ 26/41	101 +	26.85	9.42	Telus Corp	T	25.55	0.2	43974	1,834		Telephone utilities
28	▲ 11/18	100 -	75.80	57.28	Canadian National Railway	CNR	72.28	-0.2	17252	3,129	28.7	Transportation
29	▲ 11/20	100 -	34.70	26.93	Canadian Pacific Railway Ltd	CP	33.29	-1.7	28819	2,964	16.4	Transportation
30	▲ 6/39	100 -	47.30	22.37	Cognos Inc	CSN	43.35	-4.5	7002	1,808	33.7	Computer software &
31	▼ 6/23	100 +	17.80	13.50	Domtar Inc	DTC	16.55	5.8	24925	2,657	28.5	East coast forestry
32	▼ 5/20	100 -	12.33	7.23	Kinross Gold Corp	K	10.30	-6.8	445199 ★	6,971		Precious metals
33	▲ 24/25	100 -	31.39	22.83	Sun Life Financial Inc	SLF	30.35	-1.6	57172	3,747	13.2	Insurance - life
34	▲ 10/11	99 -	28.95	20.90	Barrick Gold Corp	ABX	26.60	-4.5	98147	6,134	40.3	Precious metals
35	▲ 30/31	98 +	57.59	33.96	Canadian Imperial Bank of Commerce	CM	56.37	0.2	30152	3,317	16.0	Banks
36	▲ 14/15	97 -	36.86	26.79	Brascan Corp A	BNN.A	35.63	-0.8	9201	1,511	191.6	Management and
37	▼ 3/54	97 +	40.55	20.51	Quebecor World Inc	IOW	26.90	2.2	19355	1,352	23.2	Publishing & printing
38	▲ 27/32	97 +	39.67	25.17	Toronto-Dominion Bank	TD	39.12	1.8	59849	6,259	88.9	Banks
39	▲ 27/36	96 +	64.38	42.02	Bank of Nova Scotia	BNS	62.66	1.7	28985	3,490	13.7	Banks
40	▲ 14/15	96 -	67.25	51.30	Talisman Energy Inc	TLM	63.29	-3.5	26256	2,495	8.6	Oil and gas producers

## S&P/TSX 60 Relative Strength Rankings

*Continued from the previous page*

These S&P/TSX 60 stocks are ranked by 13-week Relative Strength Indicator. The S&P/TSX 60 Index is comprised of 60 blue chip TSX stocks and provides economic diversity over eleven market sectors, including basic materials, capital goods, communication services, consumer cyclical, consumer staples, energy, financials, health care, technology, transportation and utilities. This newly created index will ultimately replace the TSE 35/100/200 indexes, so trading in these constituent stocks will reflect the portfolio demands of fund managers weighted in Canadian stocks.

	stock trends		52wk		stock	symbol	close	% chg	Vol (h)	trades	P/E	Industry
	rsi	high	low									
41	▲ 11/12	95 -	19.84	15.36	TransAlta Corp	TA	18.65	-4.0	12918 ☆	2,287	40.5	Electrical utilities
42	▲ 17/18	94 +	37.29	26.80	Canadian Tire Cp Ltd CI A NV	CTR.A	36.00	0.8	5668	872	14.0	Specialty stores
43	▲ 17/18	94 -	52.00	40.95	Enbridge Inc	ENB	49.62	-0.4	10631	1,693	14.3	Oil pipelines
44	▲ 18/19	94 -	65.00	51.84	Loblaw Cos Ltd	L	60.90	-1.4	8682	1,195	21.4	Food stores
45	▲ 20/73	94 -	56.54	42.90	Petro-Canada	PCA	53.00	-4.9	22230	3,435	8.1	Integrated oils
46	▲ 4/5	94 -	58.23	43.60	Precision Drilling Corp	PD	51.91	-3.9	9515	1,593	24.0	Oil and gas field
47	▲ 31/49	94 -	61.87	48.80	Royal Bank of Canada	RY	59.70	-0.6	37921	3,985	13.9	Banks
48	▼ 1/45	93 -	23.95	17.23	MDS Inc	MDS	18.78	-2.8	20401	1,204	34.1	Medical services
49	▲ 3/35	93 +	23.00	8.54	Rogers Communications Inc B	RCI.B	21.71	2.2	26902	1,584	13.2	Cable
50	▲ 14/15	93 -	109.00	88.51	Weston Ltd George	WN	103.60	-2.3	2553	493	19.0	Food stores
51	▲ 36/37	92 +	37.50	26.09	National Bank of Canada	NA	36.02	2.0	16606	2,814	11.2	Banks
52	▲ 10/11	92 -	27.50	22.56	Suncor Energy Inc	SU	25.26	-4.7	69582	5,037	12.3	Integrated oils
53	▲ 15/16	92 -	25.80	20.77	TransCanada Corp	TRP	25.05	-2.1	25292 ☆	3,244	15.8	Management and
54	▲ 13/14	91 -	45.33	36.00	Thomson Corp	TOC	41.98	-0.1	22851	2,296	24.4	Other services
55	⬆ 1/28	90 -	57.39	38.80	Canadian Natural Resources Ltd	CNQ	52.30	-5.3	23223	2,178	5.5	Oil and gas producers
56	⬆ 1/34	89 -	53.55	40.60	EnCana Corp	ECA	48.00	-5.5	101099	6,990	7.9	Oil and gas producers
57	▲ 15/16	88 -	32.37	24.15	BCE Inc	BCE	29.95	-0.3	73200	9,189	8.9	Telephone utilities
58	▲ 2/36	86 -	69.58	35.58	Biovail Corp	BVF	56.11	-4.2	17988	3,335	26.4	Biotechnology &
59	⬆ 1/36	84 -	38.75	26.61	Molson Inc A	MOL.A	33.88	-1.2	28054	2,730	16.3	Breweries
60	⬆ 2/19	83 -	19.00	10.22	Shaw Communications Inc B	SJR.B	16.59	-1.3	33007	1,370		Cable

## S&P/TSX Composite Index Stocks

ST indicators for the constituent stocks of the S&P/TSX Composite Index and Canadian Sector Indices. Stocks that have reached a new 52-week high/low or have gained/lost more than 10% on the week are underlined.

stock trends	52-week			this week				p/e	
	rsi	high	low	stock	close	%chg	vol(h)		yld
<b>Consumer Discretionary</b>									
▲13/14	108+	23.25	11.51	AlianAt	AAC.B	22.01	3.7	2979☆	
▲9/38	101+	26.25	16.55	Astral	ACM.A	26.25	4.5	3497	0.6 23.0
▼2/17	114+	16.49	7.92	CFM Crp	CFM	11.99	4.2	3333	10.6
▲25/32	111+	11.90	2.75	CanW	CGS.S	11.90	11.5	21471★	
▲17/18	94+	37.29	26.80	CdnTir	CTR.A	36.00	0.8	5668	1.1 14.0
▼3/44	124-	8.02	5.00	Cara Op	CAO.A	7.75	-0.6	18917	2.6 15.2
▲1/27	81+	20.60	6.25	Cogeco	CCA	17.60	0.6	3740★	110.0
▲7/21	91+	24.75	17.26	Corus En	CJR.B	23.49	3.6	3444	
▲5/6	116+	16.35	8.81	Deco	DEC.A	14.35	0.7	2117	2.7 6.7
▼2/3	90+	43.99	32.94	Dorel In	DII.B	38.25	3.1	1893	18.2
▲3/4	106-	40.60	28.10	Fairmont Ho	FHR	34.79	-1.3	5392	0.2 17.9
▲1/10	82-	23.25	14.40	Forzani	FGL	17.85	-3.5	6272	18.6
▲13/14	114+	68.97	36.25	4 Seasn	FSH	66.44	0.7	1728	0.2
▲1/87	96-	42.50	30.00	Gildan Ac	GIL.A	37.09	-11.5	13139★	14.0
▲2/23	86-	10.50	5.87	Hudson's	HBC	9.05	-0.5	4771☆	4.0 8.8
▲6/7	98+	23.03	13.50	Intrawest	ITW	18.40	4.2	7471★	0.9 16.2
▲2/3	97-	34.07	25.10	Leons Furnit	LNF	28.00	-1.8	513	1.7 15.4
▲11/12	121+	13.08	8.25	Linamar	LNR	11.75	2.4	2532☆	1.4 15.1
▲13/14	104-	116.75	73.80	Magna	MG.A	101.02	-2.3	5902☆	1.8 11.5
▲9/10	129+	23.15	11.58	QubcrIn	QBR.B	23.10	8.7	13380	18.5
▼3/54	97+	40.55	20.51	Quebecor	IQW	26.90	2.2	19355	2.6 23.2
▲3/35	93+	23.00	8.54	RgrC	RCI.B	21.71	2.2	26902	0.5 13.2
▲4/5	100+	20.00	13.60	Sears Cda	SCC	17.85	0.6	3761	1.3 10.9
▲2/19	83-	19.00	10.22	Shaw C	SJR.B	16.59	-1.3	33007	0.4
▲31/32	108+	21.51	12.01	TVA Grp	TVA.B	21.37	4.7	1309	0.9 13.4
▲12/14	112-	33.20	22.25	Tesma	TSM.A	31.36	-1.1	477☆	2.0 11.0
▲13/14	91-	45.33	36.00	Thomson	TOC	41.98	-0.1	22851	2.3 24.4
▲1/90	91+	28.20	22.51	Torstar	TS.B	26.25	0.5	9658	2.4 15.5
▲28/29	102+	22.48	14.75	Uni Select	UNS	22.48	3.9	2402★	1.2 13.5
▲1/2	107+	55.50	31.00	Wescast	WCS.A	40.10	1.5	763	1.2 10.4

<b>Consumer Staple</b>									
▲2/2	94+	8.25	3.60	Agricore	AU	7.70	2.0	2475	0.4
▲14/15	116+	17.40	10.38	Alimentat	ATD.B	17.39	6.6	4085	21.2
▲21/22	150-	18.75	4.25	CoolBra	COB.A	18.00	-2.4	18774	34.6
▲8/9	99-	65.00	49.25	Corby	CDLA	59.50	0.0	226	3.4 16.9
▲13/14	103-	33.50	22.00	Cott Corp	BCB	31.39	-1.9	5481	238.2
▲1/7	91-	31.25	21.25	Empire	EMP.A	25.45	-2.1	1136	1.6 10.7
▲2/10	92+	19.40	13.25	jcoutuA	PJ.C.A	16.20	5.5	9045	0.7 22.5
▲18/19	94-	65.00	51.84	Loblaw Cos	L	60.90	-1.4	8682	1.0 21.4
▼13/52	87-	12.25	9.50	Maple Leaf	MFI	9.94	-0.1	4012	1.6 23.1

stock trends	52-week			this week				p/e	
	rsi	high	low	stock	close	%chg	vol(h)		yld
<b>Consumer Staple</b>									
▲2/18	90+	20.20	15.76	Metro	MRU.A	19.21	1.4	18689★	1.5 11.9
▲1/36	84-	38.75	26.61	Molson	MOL.A	33.88	-1.2	28054	1.6 16.3
▲2/4	88+	34.20	21.90	Rothman	ROC	24.80	1.2	1263☆	6.0 9.9
▲14/15	96-	28.60	21.00	Saputo	SAP	27.34	-0.9	2688	1.8 15.9
▲10/11	100+	27.25	22.11	Shoppers Dr	SC	26.85	0.4	13153	23.8
▼16/25	83-	42.00	30.00	Sobey's	SBY	32.26	-0.3	16465	1.4 12.1
▲10/11	94-	16.00	10.51	Van Houtte	VH	14.40	-0.7	567☆	1.5 24.8
▲13/14	100-	28.53	20.01	Vincor	VN	27.26	-1.2	11147★	17.8
▲14/15	93-	109.00	88.51	Weston	WN	103.60	-2.3	2553	1.2 19.0

<b>Energy</b>									
▲23/36	111+	13.50	8.30	AltaGas	ALA	13.00	0.4	3268	3.4 17.8
▲2/3	91+	34.16	21.64	CHC He	FLY.A	26.40	1.5	5586	0.8 7.7
▲1/28	90-	57.39	38.80	Cdn Naturl	CNQ	52.30	-5.3	23223	1.1 5.5
▲9/47	95-	6.35	3.65	Compton	CMT	5.75	-3.5	28643	6.6
▲1/34	89-	53.55	40.60	EnCana Crp	ECA	48.00	-5.5	101099	0.8 7.9
▲11/12	90+	18.50	12.05	Enerflex	EFX	17.00	0.9	1029	2.4 26.6
▲22/39	95-	21.58	13.10	Ensign Res	ESI	20.52	-2.3	5420	1.1 29.7
▲9/10	99-	2.74	1.93	Esprit Expl	EEE	2.50	-4.9	14565	13.2
▲35/36	106-	20.95	15.43	Husky Enr	HSE	20.10	-2.4	23520	2.0 6.7
▲19/33	101-	53.49	41.55	Imperial Oil	IMO	50.32	-4.1	16427	1.8 10.3
▼2/54	107-	9.35	1.27	NQL Drill	NQL.A	3.22	-2.4	430☆	
▲8/9	102-	39.68	28.26	Nexen	NXY	37.19	-3.7	32109	0.8 6.0
▲2/79	98+	30.20	14.10	Niko Res	NKO	29.45	13.3	8825★	0.4 56.6
▼3/31	96-	13.00	8.85	Paramou	POU	9.52	-2.4	1550	
▲24/32	100-	47.49	32.76	Penn West	PWT	46.00	-2.1	6412	5.9
▲20/73	94-	56.54	42.90	Petro-Cda	PCA	53.00	-4.9	22230	0.8 8.1
▲58/81	93-	17.10	5.32	Peyto Expl	PEY	15.45	0.0	0☆	16.3
▲4/5	94-	58.23	43.60	Precision	PD	51.91	-3.9	9515	24.0
▲12/13	90-	15.93	11.50	Shawcor	SCLA	14.75	-2.4	2388☆	0.6 122.9
▲16/17	92-	54.75	43.27	Shell Cda	SHC	52.97	-1.9	4900	1.5 18.5
▲10/11	92-	27.50	22.56	Suncor Enr	SU	25.26	-4.7	69582	0.8 12.3
▲14/15	96-	67.25	51.30	Talisman	TLM	63.29	-3.5	26256	1.3 8.6
▼8/19	82-	20.00	10.36	Tesco	TEO	10.95	-10.9	6665★	
▲8/46	100+	22.75	15.60	Trican Well	TCW	22.00	7.6	896	24.7
▲23/50	103-	20.39	12.13	Ultra Petro	UP	17.93	-7.0	4295★	43.1
▲28/29	94-	28.32	20.00	Wstrn Oil	WTO	27.24	-0.5	1709☆	85.1

<b>Financials</b>									
▲10/11	98-	17.25	11.45	AGF Man	AGF.B	17.10	0.0	2548☆	1.8 16.0
▲15/16	102+	9.90	5.50	Assante	LMS	9.69	0.3	24728	29.4
▲27/48	103+	47.17	33.78	Bnk of Mtl	BMO	46.27	0.2	36990	3.0 14.1

# S&P/TSX Composite Index Stocks

Continued from the previous page

ST indicators for the constituent stocks of the S&P/TSX Composite Index and Canadian Sector Indices. Stocks that have reached a new 52-week high/low or have gained/lost more than 10% on the week are underlined.

stock trends	52-week			this week				p/e
	rsi	high	low	stock	close	%chg	vol(h)	

## Financials

▲ 27/36	96+	64.38	42.02	Bank of NS	BNS	62.66	1.7	28985	2.8	13.7
▲ 6/6	95-	15.97	14.20	Boardwalk	BEI	15.25	-1.6	2486	0.8	80.3
▲ 14/15	97-	36.86	26.79	Brascan	BNN.A	35.63	-0.8	9201	2.9	191.6
▲ 15/16	103-	33.00	26.40	Brookfield	BPO	31.98	-1.1	2057☆	2.6	15.0
▲ 27/32	113-	14.59	7.75	CI Fund Ma	CIX	14.22	-0.2	26534	2.8	44.4
▲ 30/31	98+	57.59	33.96	CIBC	CM	56.37	0.2	30152	2.9	16.0
▲ 36/37	93+	35.40	23.25	Cdn WBk	CWB	34.90	1.0	992	1.3	12.2
▲ 15/16	120+	20.30	12.00	Dund	DBC.A	19.50	3.4	1236		6.0
▲ 14/15	103-	248.55	57.00	Fairfax F	FFH	219.50	-1.2	1242	0.7	4.1
▲ 27/34	93-	42.48	32.30	Great Wst	GWO	41.30	-0.4	9715☆	2.8	15.3
▲ 6/7	91-	40.25	32.25	Industrial Al	IAG	37.51	-0.5	2327	1.8	11.7
▲ 15/16	94+	29.45	21.35	Investors Grp	IGI	29.17	2.7	7807	3.5	15.6
↕ 2/29	90-	19.60	9.50	Kingswy Fi	KFS	16.15	-2.7	19785		8.0
↘ 1/64	98+	29.35	24.61	Laurentn Bk	LB	27.31	4.0	3555	4.2	14.9
▲ 23/24	104-	43.70	27.62	Manulife Fi	MFC	43.04	-0.2	38173	1.9	14.1
▲ 36/37	92+	37.50	26.09	NationalBk	NA	36.02	2.0	16606	3.1	11.2
▲ 24/25	93+	44.14	31.52	PowrCp	POW	42.66	2.4	9327	2.3	14.8
▲ 28/29	93+	45.75	31.05	Power Fin	PWF	44.71	2.8	7870	2.7	16.0
▲ 31/49	94-	61.87	48.80	Royal Bank	RY	59.70	-0.6	37921	3.1	13.9
▲ 24/25	100-	31.39	22.83	Sun Life Fin	SLF	30.35	-1.6	57172	2.2	13.2
▲ 27/32	97+	39.67	25.17	TD Bank	TD	39.12	1.8	59849	3.3	88.9

## Health Care

▲ 4/17	110+	10.00	3.00	Aeterna	AEL	9.56	12.5	15861★		
▲ 2/21	119+	70.95	24.37	Angiotech	ANP	67.76	18.6	20373★		
▲ 14/15	108+	20.25	12.33	Axcan Pha	AXP	19.60	1.1	2767		20.8
▲ 2/36	86-	69.58	35.58	Biovail	BVF	56.11	-4.2	17988		26.4
▲ 27/28	99+	38.25	26.50	CML Healthc	CLC	36.25	0.1	259		20.7
▲ 10/11	162+	7.67	2.65	Ext	EXE.A	7.55	6.8	20721		13.0
▲ 25/40	171+	24.96	4.91	ID Biomed	IDB	24.70	23.5	5904		
↕ 1/13	82-	4.24	2.50	Isotechnik	ISA	3.36	-7.4	4483		
↘ 1/45	93-	23.95	17.23	MDS Inc	MDS	18.78	-2.8	20401	0.5	34.1
↕ 3/10	89+	16.66	12.00	Patheon	PTI	14.53	1.5	12765		24.6
▲ 2/22	128+	24.74	11.55	QLT Inc	QLT	24.19	11.2	23338		50.0
▲ 6/33	101+	7.90	2.62	Vasogen	VAS	7.45	13.2	9884★		

## Industrials

▲ 9/10	100+	14.38	8.10	ATS Autom	ATA	12.70	3.7	7780		
↘ 10/53	95-	6.29	0.69	Air Canada	AC	1.32	-2.2	94332		
▲ 1/13	88+	25.95	10.55	Ballard	BLD	17.95	2.5	8393		
▲ 5/6	117+	6.77	2.56	Bombr B	BBD.B	5.70	0.4	417200	1.6	
▲ 9/10	111-	6.79	2.76	CAE Inc	CAE	6.41	-4.6	92634	1.9	15.3

stock trends	52-week			this week				p/e
	rsi	high	low	stock	close	%chg	vol(h)	

## Industrials

▲ 11/18	100-	75.80	57.28	CN Rail	CNR	72.28	-0.2	17252	1.4	28.7
▲ 11/20	100-	34.70	26.93	CP Railway	CP	33.29	-1.7	28819	1.5	16.4
▲ 25/49	130+	30.35	16.17	CP Ships	TEU	30.35	3.2	16440	0.7	31.6
▲ 22/23	99+	33.21	20.26	Finning	FTT	32.30	0.8	3611☆	1.1	18.7
▲ 5/6	96+	34.86	16.24	FirstServi	FSV	22.50	2.0	220☆		11.8
▲ 10/11	145+	14.38	5.62	GSI Lumon	LSI	13.80	4.2	1356☆		
▲ 11/32	119-	7.98	4.34	Husky Inj	HKY	7.40	-1.9	1807☆		13.9
▲ 5/16	106+	23.45	14.15	Maax	MXA	22.25	1.1	10448	0.6	14.4
↕ 3/35	84-	26.00	16.00	MacDonld	MDA	21.89	-1.6	2671☆		19.5
■ 1/1	99+	8.87	6.53	Martinrea	MRE	7.59	4.0	7250		33.0
▲ 12/13	99-	30.45	19.97	Masonite	MHM	30.15	0.0	6484		10.7
▲ 6/34	93+	33.50	27.80	Mullen Tra	MTL	31.55	0.5	633☆	1.3	18.1
▲ 23/24	96-	17.17	12.50	Richelieu	RCH	16.50	0.0	846	0.8	18.3
■ 1/1	105+	17.50	6.57	Royal Grp	RYG	11.70	3.6	9047		10.9
▲ 17/18	103+	45.00	29.02	SNC-Laval	SNC	44.05	2.8	3951	0.9	27.7
▲ 24/31	107-	21.48	12.94	Stantec	STN	21.00	0.0	1741		16.0
▲ 25/29	106-	29.00	18.60	Toromont	TIH	27.60	-1.1	674☆	1.6	18.9
↘ 14/52	116+	7.05	3.40	Transat AT	TRZ	5.79	12.9	2273		
0/0	96+	20.37	15.25	Transcont	TCL.A	19.95	0.8	2459	0.7	13.0
↘ 5/46	98+	10.95	7.16	Trojan Tc	TUV	8.20	0.4	2284		43.2
▲ 6/7	147+	25.80	13.87	WestJet	WJA	25.21	1.5	6486		39.4
▲ 12/13	103+	16.34	9.95	Zenon Envir	ZEN	16.21	3.7	710		39.5

## Information Technology

▲ 15/16	176+	21.55	5.54	ATI Tech	ATY	20.81	4.3	56616		
↘ 3/49	83+	22.90	12.11	Aastra Tech	AAH	15.23	2.2	1336☆		9.2
↘ 11/12	73-	9.95	5.26	BCE Emer	IFM	5.75	-5.1	9472		25.0
▲ 3/37	90+	8.65	4.95	CGI	GIB.A	7.97	0.6	42553		19.0
▲ 6/8	106-	29.99	13.50	Celestica	CLS	24.70	-0.1	58709		
▲ 28/38	164+	29.60	5.31	Cinram	CRW	28.50	8.0	21491	0.4	23.9
▲ 6/39	100-	47.30	22.37	Cognos	CSN	43.35	-4.5	7002		33.7
▲ 6/7	121+	15.36	6.80	Creo	CRE	14.54	3.9	10608		141.8
↘ 5/27	104+	5.95	2.83	Descartes	DSG	3.48	3.6	4189☆		
▲ 5/36	104+	6.36	2.60	Geac	GAC	6.30	8.4	20543		10.0
↘ 2/9	101+	17.50	10.15	Gennum	GND	14.80	12.5	3546	0.8	32.9
↘ 1/24	98+	36.28	18.40	Humming	HUM	28.90	5.3	1634		97.6
↘ 14/77	90+	8.00	3.96	Leitch Tec	LTV	4.54	3.4	4479☆		
▲ 23/36	136+	6.50	0.67	Nortel Netwk	NT	6.06	11.0	1910033		
▲ 6/7	94-	19.50	12.60	Onex C	OCX	15.40	-0.8	20080		0.7
▲ 2/3	110-	52.75	27.10	Open Text	OTC	48.55	-4.5	2372☆		24.1
▲ 27/37	141+	47.80	13.19	RIM Ltd	RIM	46.50	3.3	21276		

# S&P/TSX Composite Index Stocks

Continued from the previous page

ST indicators for the constituent stocks of the S&P/TSX Composite Index and Canadian Sector Indices. Stocks that have reached a new 52-week high/low or have gained/lost more than 10% on the week are underlined.

stock trends	52-week			this week				p/e		
	rsi	high	low	stock	close	%chg	vol(h)		yld	ratio
<b>Information Technology</b>										
↑4/25	92-	7.94	1.98	Zarlink	ZL	6.98	-0.3	35838		
<b>Materials</b>										
↑7/8	115+	36.00	25.00	Aber Diam	ABZ	35.50	7.5	14829	114.5	
↓6/56	105+	13.13	8.45	Abitibi Consl	A	10.18	1.2	82304	1.0	10.3
↓9/27	103-	26.89	14.14	Agnico-Ea	AGE	18.47	-7.7	22611	0.2	162.4
↓5/15	109-	18.49	14.11	Agrium	AGU	17.55	-1.3	18786	0.8	23.0
↑5/6	115+	53.75	36.90	Alcan	AL	53.25	10.5	103093	1.5	76.0
↑4/5	135+	5.06	2.20	Aur Res	AUR	5.00	2.0	10014		64.8
↑10/11	99-	28.95	20.90	Barrick	ABX	26.60	-4.5	98147	1.1	40.3
↑6/7	174-	3.52	1.39	Bema GI	BGO	3.18	-5.1	133131		
↑9/10	103-	21.25	15.05	CCL Inds	CCL.B	19.80	0.0	717☆	1.8	27.5
↑21/35	102+	48.50	25.15	Cameco	CCO	48.43	3.2	14055	1.2	15.9
↑2/3	123+	10.95	6.83	Canfor	CFP	10.95	2.8	5818		
↑2/3	91-	17.14	11.56	Cascades	CAS	13.70	-3.5	2994	1.2	8.7
↑5/6	101-	32.30	25.12	Dofasco Inc	DFS	29.92	-3.6	13526	4.0	18.4
↓6/23	100+	17.80	13.50	Domtar	DTC	16.55	5.8	24925	1.4	28.5
↑22/86	146+	3.72	1.26	Eldorado	ELD	3.61	11.1	164355		271.4
↑17/28	115+	22.80	13.30	Falconbridge	FL	22.72	6.2	23895	1.8	35.0
↓7/47	118-	5.20	1.65	Gabriel	GBU	3.29	-1.2	16418☆		
↑9/14	101-	20.53	11.55	Glamis	GLG	17.60	-4.6	21271		105.8
↑1/2	100-	21.40	13.86	Goldcorp	G	18.33	-4.1	25579	1.1	31.1
↑9/36	107-	8.70	4.86	Iamgold	IMG	7.88	-5.5	68394★	0.6	90.5
↑3/4	126+	38.06	24.30	Inco	N	37.86	5.0	43479		32.5
↓2/14	99+	7.90	3.66	Intl Forest	IFP.A	5.58	0.5	4407		34.9
↑10/11	117+	14.02	4.50	Intertape	ITP	10.04	1.3	1378		1.5
↑3/4	103-	19.60	11.50	Ipsco	IPS	16.25	-0.2	3456	1.2	67.7
↑26/35	196+	7.35	2.45	Ivanhoe	IVN	7.14	6.9	50353		
↓5/20	100-	12.33	7.23	Kinross	K	10.30	-6.8	445199★		
↑24/41	112+	7.05	3.11	LionOre	LIM	7.03	1.9	34290		34.1
↓1/40	102-	32.20	12.71	MeridinGI	MNG	17.30	-4.9	16427		29.4
□1/1	82-	16.27	11.58	Methanx	MX	13.40	-6.9	24976	5.0	7.5
↑12/13	108+	10.04	7.01	Nexfor	NF	9.85	1.5	11482		4.1
↑2/3	101+	16.60	11.69	Noranda	NRD	14.23	3.1	46085		3.4
↓8/59	101-	6.06	3.00	Norske Skog	NS	4.00	-1.0	32154		
↓9/56	103+	33.87	24.65	Nova Ch	NCX	29.50	0.8	14576	1.4	161.7
↑7/8	134-	15.05	7.16	PanAm Si	PAA	14.33	-3.5	4197		
↑9/10	102-	19.72	12.66	Placer Do	PDG	18.55	-4.5	101388	0.7	36.5
■1/1	107-	108.50	81.50	Potash	POT	96.73	-0.9	3595	1.4	54.4
↑12/16	103+	22.00	17.00	St Lawr	ST.A	21.00	3.2	466	2.4	12.4
↑7/8	102+	5.25	3.96	Sherritt Intl	S	5.06	3.3	12892		9.9

stock trends	52-week			this week				p/e		
	rsi	high	low	stock	close	%chg	vol(h)		yld	ratio
<b>Materials</b>										
↑6/7	108+	9.50	6.75	Slocan Fore	SFF	9.05	3.3	739		100.6
↓9/20	105+	8.10	5.00	SthrnEra	SUF	6.20	0.6	9716		
↓1/55	102+	4.85	0.93	Stelco	STE.A	1.38	13.1	72256		
↑5/6	123+	14.83	9.85	Teck Co	TEK.B	14.83	4.1	37395	1.4	74.2
↓7/54	122+	12.60	6.20	Tembec	TBC	9.70	3.7	5822		
↓3/18	93+	39.05	26.27	West Fras	WFT	35.50	0.5	216☆	1.6	22.1
<b>Telecommunication Services</b>										
↑24/25	95-	31.39	24.99	Alliant	AIT	30.80	-0.6	4863	3.6	30.8
↑15/16	88-	32.37	24.15	BCE Inc	BCE	29.95	-0.3	73200	4.0	8.9
↑46/47	100+	44.25	29.75	Manitoba	MBT	42.00	0.4	4993	2.4	31.6
↑4/37	86-	24.50	6.00	Roger	RCM.B	21.00	-1.9	1886		72.4
↑16/17	117-	14.98	7.06	Stratos	SGB	14.20	-4.1	1680		19.8
↑26/41	101+	26.85	9.42	Telus Corp	T	25.55	0.2	43974		2.4
<b>Utilities</b>										
↑11/12	92-	50.00	40.05	Atco	ACO.X	46.75	-0.4	519☆	2.7	10.8
↑10/11	93+	60.00	45.10	Cdn Util	CU	54.50	0.5	1704	3.7	14.0
↑12/13	94-	17.90	14.20	Emera	EMA	17.27	-1.3	4278	5.0	17.3
↑17/18	94-	52.00	40.95	Enbridge	ENB	49.62	-0.4	10631	3.4	14.3
↑1/169	91-	60.95	46.50	Fortis	FTS	54.91	-7.5	3674★	3.8	13.1
0/0	95+	44.85	35.80	Terasen	TER	44.20	0.2	1753☆	3.5	18.6
↑11/12	95-	19.84	15.36	TransAlta	TA	18.65	-4.0	12918☆	5.4	40.5
↑15/16	92-	25.80	20.77	TransCanad	TRP	25.05	-2.1	25292☆	4.3	15.8

## **TSX Industry Reports**

Our TSX Industry Reports are now available online at our web site – [www.stocktrends.ca](http://www.stocktrends.ca)

To access each of these reports, you can click on the following links:

[Industrial Products](#)

[Consumer Products](#)

[Merchandising](#)

[Communications](#)

[Mining](#)

[Oil & Gas](#)

[Conglomerates](#)

[Real Estate](#)

[Forestry](#)

[Service Industry](#)

[Transportation](#)

[Utilities](#)

## TSX Weekly Summary

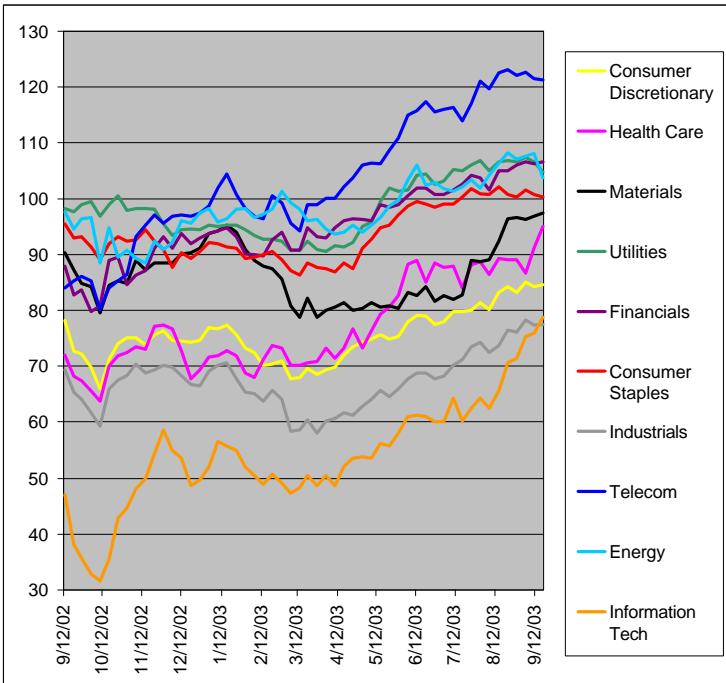
Advance/Decline ratio: numbers greater than 1.00 mean more stocks advanced in price on the week than declined.

Bull/Bear ratio: numbers greater than 1.00 mean more stocks are in a bull trend than in a bear trend .

RSI +/- Ratio: numbers greater than 1.00 mean more stocks out-performed the TSE 300 on the week than under-performed.

Average 13-week percentage change in price, average p/e ratio and average price to book value ratio is given for large cap (market value above \$500-million) and small cap stocks.

week ended	S&P/TSX close	% chg	total issues	issues traded	advance/	Bull/Bear Ratio	+/-	Large Cap Stocks			Mid/Small Cap Stocks			volume (000's)	trades
					decline ratio		rsi ratio	13 wk % chg	avg p/e	avg p/bv	13 wk % chg	avg p/e	avg p/bv		
03/27/03	6353.44	-1.8	1,731	1,522	0.69	<b>1.01</b>	2.28	-4.4	16.3	1.7	-1.0	12.9	1.1	962,310	443,167
04/03/03	6396.63	0.6	1,732	1,505	0.84	<b>1.00</b>	0.44	-5.3	16.7	1.7	-3.7	13.1	1.1	954,354	377,968
04/10/03	6418.47	0.3	1,731	1,532	1.13	<b>0.96</b>	0.59	-5.3	16.7	1.7	-5.6	12.9	1.1	1,015,005	442,290
04/17/03	6525.68	1.6	1,734	1,545	1.26	<b>0.94</b>	0.34	-4.8	16.5	1.8	-6.9	13.0	1.1	906,557	394,679
04/24/03	6561.55	0.5	1,735	1,523	1.30	<b>0.89</b>	0.57	-3.1	16.1	1.8	-6.1	13.0	1.1	967,182	351,321
05/01/03	6569.31	0.1	1,718	1,544	1.38	<b>0.86</b>	0.85	-0.4	16.4	1.8	-4.2	13.1	1.1	994,759	445,287
05/08/03	6620.77	0.7	1,724	1,547	1.69	<b>0.84</b>	0.69	1.7	16.7	1.7	-2.2	13.4	1.1	1,165,619	508,888
05/15/03	6758.43	2.0	1,722	1,546	1.53	<b>0.85</b>	0.39	3.9	16.8	1.8	-0.6	13.5	1.1	1,101,891	489,297
05/22/03	6779.34	0.3	1,728	1,533	1.07	<b>0.83</b>	0.60	2.3	16.4	1.7	-0.9	13.2	1.1	938,320	422,962
05/29/03	6836.56	0.8	1,729	1,549	1.57	<b>0.84</b>	0.68	4.6	16.4	1.7	1.0	13.2	1.1	1,061,973	474,135
06/05/03	7034.87	2.9	1,730	1,547	1.95	<b>0.90</b>	0.37	12.0	16.5	1.8	4.2	13.3	1.2	1,281,665	597,924
06/12/03	7106.86	1.0	1,732	1,561	1.59	<b>0.99</b>	0.63	14.3	16.6	1.8	7.7	13.7	1.2	1,218,586	593,047
06/19/03	7078.48	-0.4	1,735	1,550	1.04	<b>1.09</b>	1.79	12.3	16.6	1.8	7.8	13.5	1.2	1,307,208	577,739
06/26/03	6991.40	-1.2	1,738	1,549	0.70	<b>1.17</b>	1.85	13.1	16.4	1.8	7.9	13.5	1.2	1,008,604	491,642
07/03/03	6999.78	0.1	1,741	1,508	1.12	<b>1.28</b>	0.65	18.6	16.5	1.8	9.4	13.7	1.2	717,321	353,077
07/10/03	7071.54	1.0	1,744	1,532	1.36	<b>1.37</b>	0.55	13.6	16.8	1.8	11.5	14.1	1.2	949,603	455,758
07/17/03	7069.35	-0.0	1,751	1,560	0.86	<b>1.43</b>	1.31	11.3	17.0	1.8	10.7	13.8	1.2	1,117,185	485,018
07/24/03	7251.44	2.5	1,759	1,554	1.78	<b>1.51</b>	0.39	14.0	18.0	1.8	11.7	14.0	1.2	1,134,991	520,552
07/31/03	7257.92	0.0	1,762	1,564	1.00	<b>1.57</b>	0.65	14.7	18.3	1.8	11.2	14.4	1.2	1,142,509	521,222
08/07/03	7180.27	-1.0	1,768	1,535	1.00	<b>1.64</b>	2.54	12.4	17.9	1.8	9.7	14.3	1.2	833,202	384,703
08/14/03	7393.76	2.9	1,769	1,531	1.93	<b>1.76</b>	0.36	13.3	18.2	1.9	11.5	14.2	1.3	1,085,089	406,572
08/21/03	7516.45	1.6	1,775	1,561	1.97	<b>1.86</b>	0.55	15.8	17.6	1.9	15.3	14.4	1.3	1,032,237	490,917
08/28/03	7516.95	0.0	1,777	1,579	1.17	<b>1.98</b>	0.77	14.6	17.5	1.9	14.9	14.7	1.3	1,168,199	650,285
09/04/03	7594.85	1.0	1,779	1,577	1.22	<b>2.07</b>	0.48	11.9	17.5	1.9	13.9	14.9	1.3	1,128,249	465,243
09/11/03	7598.48	0.0	1,756	1,584	1.31	<b>2.23</b>	0.85	11.2	17.5	2.0	15.4	15.2	1.4	1,622,364	691,881
09/18/03	7600.59	0.0	1,758	1,579	1.06	<b>2.38</b>	0.74	11.2	17.9	1.9	16.1	14.5	1.4	1,398,430	617,038



	<i>RSI Index</i>	<i>Close</i>	<i>Week %chg</i>
↑	117	S&P/TSX MINING INDEX	163.42 4.2
↑	104	S&P/TSX HEALTH CARE INDEX	76.78 4.1
↑	112	NASDAQ CANADA	370.93 3.5
↑	107	S&P/TSX SMALL CAP	535.49 2.0
↑	108	S&P/TSX MATERIALS INDEX	132.32 0.7
↑	100	S&P/TSX CANADIAN MIDCAP	491.49 0.4
↑	105	S&P/TSX INDUSTRIALS INDEX	72.83 0.4
↑	115	S&P/TSX CDNX VENTURE	1374.01 0.4
↑	98	S&P/TSX FINANCIALS INDEX	122.89 0.4
↑	100	S&P/TSX CONS DISCRET INDE	81.77 0.3
↑	100	S&P/TSX COMPOSITE INDEX	7600.59 0.0
↑	94	S&P/TSX CONS STAPLES INDEX	163.55 -0.5
↑	94	S&P/TSX ENERGY INDEX	134.54 -4.0
↑	104	S&P/TSX GOLD INDEX	195.99 -4.4
↑	107	S&P/TSX REAL ESTATE INDEX	128.7 -1.1
↑	120	S&P/TSX INFO TECH INDEX	25.82 3.8
↑	96	S&P/TSX TELECOMM INDEX	60.44 -0.2
↑	94	S&P/TSX UTILITIES INDEX	143.22 -1.7
↑	99	S&P/TSX 60 INDEX	426.72 -0.3

The graph above is indexed to 100 at a base date of March 21, 2002. The purpose is to give a visual representation of the relative price movements of the 10 sector indexes since the base date. The table above ranks the performance of the individual sector indexes over the past week. The Stock Trends trend indicator and 13-week Relative Strength Indicator are also provided for each index.

Please refer to the **S&P/TSX Canadian Sector Indexes stocks** report for listings of the leading stocks in individual sectors.



**TSX Venture Exchange high volume and price momentum**

This trading report of TSX Venture Exchange stocks highlights actively traded issues this past week. Trend analysis is not an effective tool for analyzing penny stocks, and the Stock Trends primary 13-week and 40-week time parameters are far too lagging. In this report the look-back period has been shortened as follows: short-term moving average period is 3 weeks, long-term moving average period is 13-weeks. The conditions for the various indicators are the same as the TSX indicators – the only difference is the short look-back period.

The Stock Trends indicators below represent short-term trend indicators and help smooth the weekly price data. The RSI value is a 3-week price momentum measure comparing the performance of the stock with the S&P/TSX Venture composite index. The volume average is also over a three-week period.

Use this report to identify stocks that have significant price and volume breakout in recent weeks.

	<i>RSI</i>	<i>Stock</i>	<i>Sym</i>	<i>Close</i>	<i>Week high</i>	<i>Week low</i>	<i>%chg</i>	<i>3-wk %chg</i>	<i>Vol (00's)</i>	<i>Trades</i>	
■	232 +	Biophage Pharma Inc	BUG	0.22	0.25	0.07	175.0	144.4	24753	★	330
↑	216 +	Lingo Media Inc	LMD	0.25	0.26	0.14	127.3	127.3	1585	★	24
↑	317 +	Las Vegas From Home.com Ent	LVH	0.15	0.16	0.07	114.3	233.3	98256	★	615
↑	290 +	Magistral Biotech Inc	MBS	0.61	0.72	0.34	84.8	205.0	11337	★	280
↑	190 +	Reg Tech Cp	RRE	0.32	0.32	0.18	77.8	100.0	1229	★	28
	136 +	Grande Portage Res H	GPG.H	0.10	0.10	0.06	66.7	42.9	7380	★	27
	190 +	Shane Res Ltd H	SEI.H	0.10	0.10	0.08	66.7	100.0	1555	★	7
	179 +	Ballad Gold And Silver Ltd	BGS	0.85	1.00	0.47	63.5	88.9	7314	★	287
↑	217 +	How To Web TV Inc	HOW	0.16	0.16	0.10	60.0	128.6	6495	★	5
↑	185 +	Pelangio Mines Ltd	YPM	0.38	0.40	0.23	52.0	94.9	31427	★	206
	127 +	InBusiness Solutions Inc H	BIZ.H	0.12	0.12	0.08	50.0	33.3	4182	★	18
↑	152 +	Brigadier Gold Ltd	YRG	0.24	0.24	0.17	41.2	60.0	1720	★	19
↓	133 +	GMD Resources Corp	GMD	0.07	0.07	0.04	40.0	40.0	1566	★	16
↑	133 +	Aldeavision Inc	ALD	0.07	0.08	0.05	40.0	40.0	1456	★	13
↑	180 +	Eagle Plains Resources Ltd	EPL	0.37	0.40	0.28	37.0	89.7	10048	★	160
↑	125 +	Jones Soda Co	JSD	1.81	1.90	1.33	34.1	32.1	4225	★	175
↑	116 +	Monroe Minerals Inc	MMX	0.28	0.28	0.22	33.3	21.7	2998	★	38
↓	147 +	VendTek Systems Inc	VSI	0.09	0.09	0.07	30.8	54.5	1661	★	19
↓	112 +	Syscan International Inc	SYA	0.26	0.26	0.19	30.0	18.2	1834	★	31
↑	146 +	Ecstall Mining Corp	EAM	0.21	0.29	0.21	26.5	53.6	26400	★	412
↓	114 +	On-Track Learning Systems Ltd	OT	0.12	0.16	0.10	26.3	20.0	8080	★	59
■	122 +	Webtech Wireless Inc	WEW	0.50	0.52	0.40	25.0	28.2	1725	★	47
■	119 +	Minterra Resource Corp	MTR	0.10	0.12	0.09	25.0	25.0	1050	★	10
↑	134 +	Lyrtech Inc	LYT	0.31	0.40	0.15	24.0	40.9	85173	★	144
↑	162 +	Medical Ventures Corp	MEV	1.35	1.40	1.15	22.7	70.9	2130	★	57
↑	122 +	Forest Gate Resources Inc	FGT	0.18	0.19	0.15	20.0	28.6	10467	★	101
↓	124 +	PKI Innovations (Canada) Inc	PKX	0.30	0.35	0.28	20.0	30.4	1355	★	21
↓	100 +	PetHealth Inc	PTZ	0.18	0.18	0.15	19.4	5.7	4295	★	14
↓	106 +	International Bio Recovery Corp	IBR	0.50	0.50	0.39	19.0	11.1	2978	★	30
■	118 +	United Carina Resources Corp	UCA	0.13	0.15	0.10	18.2	23.8	2316	★	19
↑	114 +	Dynex Power Inc	DNX	0.60	0.80	0.50	17.6	20.0	5374	★	43
↑	102 +	Photochannel Networks Inc	PNI	0.14	0.15	0.12	16.0	7.4	35841	★	210
↑	126 +	Vigil Health Solutions Inc	VGL	0.49	0.51	0.35	15.3	32.4	32236	★	124
↓	127 +	Plexmar Resources Inc	PLE	0.16	0.19	0.14	14.3	33.3	2881	★	36
↑	127 +	Gateway Gold Corp	GTQ	2.55	2.75	2.25	13.3	34.2	5169	★	150
↑	125 +	Strateco Resources Inc	RSC	0.14	0.15	0.11	11.5	31.8	7550	★	57
↑	162 +	Leeward Capital Corp	LWC	0.14	0.16	0.13	11.5	70.6	2140	★	18
↑	116 +	Endeavour Mining Capital Corp	EDV	3.23	3.23	2.90	11.4	21.9	67114	★	516

## SYMBOL GUIDE & GLOSSARY

### Moving Average Trend Indicator Symbols:

Note: Stocks with less than 40 weeks of price history or a narrow trading range are not tagged with moving average trend indicators.

<i>Symbol</i>	<b>Name</b>	<b>Description</b>
■	Bullish Crossover	The 13-week moving average price has moved <b>above</b> the 40-week moving average price, signifying a <i>long-term trend reversal</i> from <b>Bearish</b> to <b>Bullish</b> .
↑	Strong Bullish	The 13-week moving average price is above the 40-week moving average and the short-term price trend is strong.
⇧	Weak Bullish	The 13-week moving average price is above the 40-week moving average, but the short-term price trend is weakening.
□	Bearish Crossover	The 13-week moving average price has moved <b>below</b> the 40-week moving average, signifying a <i>long-term trend reversal</i> from <b>Bullish</b> to <b>Bearish</b> .
↓	Strong Bearish	The 13-week moving average price is below the 40-week moving average and the short-term price trend is weak. Generally a stock that has hit hard times. Investors looking for value opportunities should review these stocks for low price/earnings ratios.
⇩	Weak Bearish	The 13-week moving average price is below the 40-week moving average, but the short-term price trend is strengthening. Investors looking for stocks ready to break out into a new bullish trend should keep an eye on these stocks for new buying opportunities, paying special attention to stocks with strong trading volumes. Short sellers may wish to cover.

Each trend indicator has two **Trend Counter** values beside it. The first value is the number of weeks the stock has displayed the current trend indicator. The second value is the number of weeks the stock has displayed the current long-term trend indicator, either an up or a down arrow. For example, ⇩ **5/25** means the stock has been tagged with the current weak bearish indicator for 5 weeks, and has been tagged in its long-term downward trend for 25 weeks. Because Stock Trends indicators are symbolic representations of a stock's historical price performance, it is important to distinguish trending stocks by determining how long a trend has been identified.

The **Relative Strength Indicator (RSI)** compares a stock's performance to that of the S&P/TSX Composite Index over the last 13 weeks. Values over 100 indicate the stock is outperforming the index. Values under 100 indicate the stock is under-performing the index. For example, a value of 115 indicates the stock is outperforming the S&P/TSX Composite Index by 15 per cent; while a value of 85 indicates it is under-performing the market by 15 per cent. The + or - signs indicate that a stock has either outperformed or under-performed the S&P/TSX Composite Index over the week. Investors looking for buying opportunities could look for weak bearish stocks (⇩) with an RSI of 110 or greater.

### Volume Indicator Symbols

- ★ Weekly volume is at least double its 13-week average. This is a good sign if price movement is bullish but may also indicate a sell-off of a stock.
- ☆ Weekly volume is 50% or less of its 13-week average.

**Relative Volume** is a measure of a stock's weekly trading volume as a percentage of its total shares issued and outstanding.

**Momentum Index** measures the volume momentum behind a stock's weekly price change. It is calculated by taking the weekly percentage change in price and multiplying it by a factor calculated as the sum of the stock's Relative Volume factor (% of O/S shares traded) and a factor representing the weekly volume compared to its 13-week average weekly volume, i.e. .5 if the weekly volume is less than ½ the 13-week average, 2 if the weekly volume is more than twice the 13-week average, or 1 if the weekly volume is within 50-200% of the 13-week average.

Questions about Stock Trends can be faxed to **1-888-269-6857** or emailed to [skortje@globeandmail.ca](mailto:skortje@globeandmail.ca)